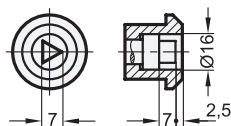
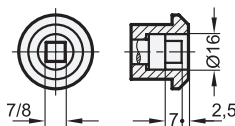


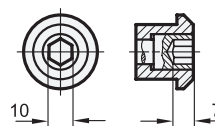
- 1 Type**
- Operation with
- DK** triangular spindle (DK7)
  - VK7** square spindle A/F7
  - VK8** square spindle A/F8
  - SCH** slot
  - VDE** double bit
  - SK10** hexagon A/F10



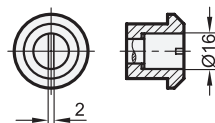
Type DK



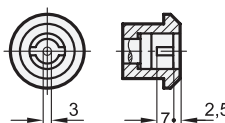
Type VK7 / VK8



Type SK10



Type SCH



Type VDE

**2**

Latch distance A											d	h
4	8	13	16	20	24	28	32	36	40	45	28	4
6	10	14	18	22	26	30	34	38	42	50	28	4

**Specification**

- Lock housing  
Zinc die casting
- Locating ring
  - chrome plated (Standard) —
  - plastic coated black, RAL 9005, textured finish ● **SW**
- All other parts  
Steel zinc plated, blue passivated
- **RoHS compliant**

**Accessories**

- Socket keys GN 119.2 → Page 940
- Protective caps GN 120 → Page 942
- Opening handles GN 120.1 → Page 943

**3**

**Information**

Latches GN 115 lock by a turning operation limited to 90° which moves the locking behind the door frame. The bevels of the latch ease the closing of the door.

Latches with different cranks cover a latch distance A from 4 to 50 mm.

Latches GN 115 are supplied with loosely enclosed latch.

see also...

- Construction and assembly instructions → Page 897
- List of latch types → Page 892 ff.
- Latches GN 115 (operation with operating elements) → Page 899
- Stainless Steel-Latches GN 115 (operation with key) → Page 902

How to order (chrome plated locating ring)

<b>1</b>	Type
<b>2</b>	Latch distance A

**GN 115-VK8-20**

How to order (black locating ring)

<b>1</b>	Type
<b>2</b>	Latch distance A
<b>3</b>	Finish

**GN 115-SCH-32-SW**