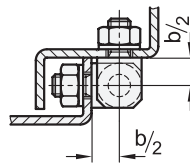
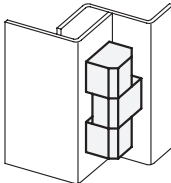
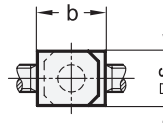


**2** Type

**D** consisting of three parts  
**Z** consisting of two parts



s	b	d <sub>1</sub>	d <sub>2</sub> Pin	h <sub>1</sub>	h <sub>2</sub>	l <sub>1</sub>	l <sub>2</sub>	l <sub>3</sub>	l <sub>4</sub> max.	l <sub>5</sub>	l <sub>6</sub>	m <sub>1</sub>	m <sub>2</sub>
12	15	M 6	6	39,2	25,6	10	5	14	9	10	5	27,2	13,6
16	20	M 8	8	49	32,5	14	8	22	16	14	8	33	16,5

**Specification**

- Steel zinc plated, blue passivated
- Pin  
Brass, nickel plated
- Washer  
Brass, nickel plated
- Hexagon nut ISO 4032  
Steel zinc plated, blue passivated
- Serrated washer DIN 6797  
for securing screws  
zinc plated, blue passivated
- RoHS compliant

**Information**

Hinges GN 129 are used for doors which are flush with the frame on the outside. The hinges are normally arranged to the side of the door.

In the two-part design, the door can be unhinged with two identically arranged hinges.

The three-part hinges, which generally cannot be unhinged and are mounted inside, are suitable for doors and flaps which, as anti-tamper precaution, must not be dismountable from the outside.

see also...

- List of hinge types → Page 956 ff.
- Hinges GN 129.2 (Steel / Stainless Steel) → Page 976
- Hinges GN 129.3 (Steel) → Page 977

How to order

**GN 129-16-D**

- 1** s
- 2** Type