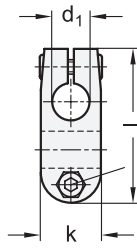
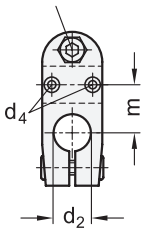


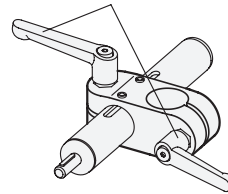
Clamping thread  $d_3$



**GN 131.1**  
for single axis system

Clamping thread  $d_3$

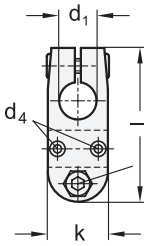
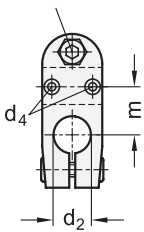
Clamping kit



ROSTFREI  
Inox  
Stainless  
Steel

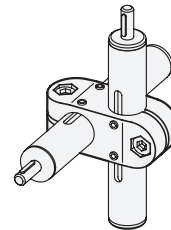
**3 Identification no.**  
**2** with 2 Stainless Steel-  
Clamping screws DIN 912

Clamping thread  $d_3$



**GN 131.2**  
for two-way axis system

Clamping thread  $d_3$



**1**

**2**

$d_1$		$d_2$		$d_3$	$d_4$	$k$	Length $l$	$m$	Clamping kit for $d_3$	
Bore B without slide bushing	Bore G with slide bushing	Bore B without slide bushing	Bore G with slide bushing	Clamping thread	Mounting screw on the follower	Clamping length			Lever zinc die casting	Lever Stainless Steel
B 18	G 18	B 18	G 18	M 6	M 3	25	64	20	GN 911-M6-22	GN 911.3-M6-22

**Specification**

**4**

- Aluminum plastic coated black, RAL 9005, textured finish **● SW**
- Stainless Steel AISI CF-8 **● NI**
  - matte shot-blasted
  - Bore only with slide bushing (G18)
- Clamping bores mechanically machined
- Slide bushing Polyamide
- Socket cap screws DIN 912 Stainless Steel AISI 304
- Hexagon nuts DIN 985 Stainless Steel AISI 304
- Stainless Steel characteristics → Page 1489
- RoHS compliant

**Accessory**

- Clamping kits GN 911 / GN 911.3 → Page 1242

**Information**

GN 131.1 / GN 131.2 linear actuator connectors are normally supplied **mounted** only in connection with a linear actuator and for function control.

By means of the clamping screws on the guide bores  $d_1 / d_2$  the movement can either be set or the linear actuator connector can be clamped (after setting of final adjustment).

The standard version of the clamping screws are socket cap screws with hexagonal socket DIN 912. They can be replaced by clamping kits GN 911 / GN 911.3 (article code see table of dimensions).

see also...

- Construction tubes GN 990 → Page 1277
- Linear actuators GN 291 → Page 1326
- Linear actuators GN 292 → Page 1328

How to order (Single axis system, Aluminum)

**GN 131.1-G18-B18-2-SW**

<b>1</b>	$d_1$
<b>2</b>	$d_2$
<b>3</b>	Identification no.
<b>4</b>	Finish

How to order (Two-way axis system, St. Steel)

**GN 131.2-G18-G18-2-NI**

<b>1</b>	$d_1$
<b>2</b>	$d_2$
<b>3</b>	Identification no.
<b>4</b>	Material