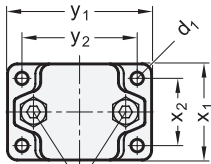
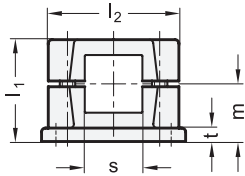


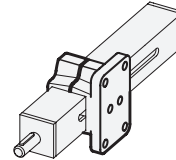
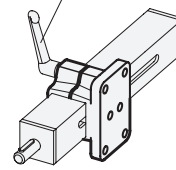
GN 147.1 Linear actuator connectors

Aluminum, for square linear actuators



Clamping thread d_2


Clamping kit



2 Identification no.

2 with 2 Stainless Steel-Clamping screws DIN 912

1

s	d_1	d_2	d_3	k	l_1	l_2	m	t	x_1	x_2	y_1	y_2	Clamping kits for d_2
Square V		Clamping thread	Mounting screw on the follower	Clamping length									
V 30	6,5	M 8	M 4	50	53	68	30	7	50	35	75	60	GN 911-M 8-45
V 40	11	M 10	M 5	76	81,5	98	46,5	14	76	50	115	90	GN 911-M10-70
V 50	11	M 10	M 6	76	81,5	98	46,5	14	76	50	115	90	GN 911-M10-70

Specification

- Aluminum plastic coated black, RAL 9005, textured finish ● SW
- Clamping square not machined
- Socket cap screws DIN 912 Stainless Steel AISI 304
- Hexagon nuts DIN 985 Stainless Steel AISI 304
- Stainless Steel characteristics → Page 1489
- RoHS compliant

Accessory

- Clamping kits GN 911 → Page 1242

On request

- Linear actuator connectors with little play

3

Information

GN 147.1 linear actuator connectors are normally supplied **mounted** only in connection with a square linear actuator and for function control.

The square of the linear actuator connector is supplied not machined in the standard design. Together with the tolerance of the tube, this may result in a relatively large play.

This can be adjusted in one direction using the clamping screws. In the other direction (90° to it), a defined minimum play can be achieved only by appropriate machining (special design) of the square linear actuator connector.

The standard version of the clamping screws are socket cap screws with hexagonal socket DIN 912. They can be replaced by clamping kits GN 911 (article code see table of dimensions).

see also...

- Square linear actuators GN 291.1 → Page 1340

How to order

GN 147.1-V30-2-SW

1	s
2	Identification no.
3	Finish