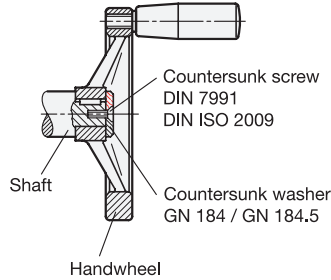
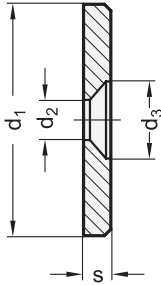


Example of application:
Fixing
of a handwheel
with keyway
on the shaft



ROSTFREI
Inox
Stainless
Steel

1

d ₁	d ₂	d ₃	s	for countersunk screws DIN 7991 / DIN ISO 2009
16	4,3	8	3	M 4
20	4,3	8	3	M 4
22	5,3	10	3,5	M 5
25	5,3	10	3,5	M 5
28	5,3	10	3,5	M 5
32	6,4	12	4	M 6
36	6,4	12	4	M 6
40	6,4	12	5	M 6
45	6,4	12	6	M 6
52	6,4	12	6	M 6

Specification

- **GN 184**
Steel
- turned
- blackened
- **GN 184.5**
Stainless Steel AISI 303
- turned
- matt shot-blasted
- *Stainless Steel characteristics → Page 1489*
- **RoHS compliant**

Information

Countersunk washers GN 184 / GN 184.5 are retained to the face of the shaft end with a countersunk head screw DIN ISO 2009 or DIN 7991 forming a clean-look end cap.

A typical application is the retention of handwheels with hub keyed to the shaft.

How to order (Steel)

GN 184-28

1 d₁

How to order (Stainless Steel)

GN 184.5-36

1 d₁