

ELESA original design VC.308/309

2 Type

- A** with straight latch
B with offset latch

3 Specification

- SL** lockable by anti-clockwise turn
SR lockable by clockwise turn
OS without lock, moveable by 90 degrees

1

d_1	a_1 Type A	a_2 Type B	b	d_2	h_1	h_2	$l_1 \pm 0,5$ Type A	$l_2 \pm 0,5$ Type B
40	50	48	20	29	25	11	10	18

Specification

- Star knob
Plastic Technopolymer (Polypropylene PP)
- black, matte
- temperature resistant up to 90 °C
- Latch
Sheet Steel, zinc plated
- Key
Brass, nickel plated
- Other parts
Steel zinc plated
resp. brass or Stainless Steel
- Plastic characteristics → Page 1271
- RoHS compliant

On request

- Latches with identical lock
- Latches with central key

Information

Latches GN 217 with lock are supplied with two keys. The keys are numbered, there are 480 different combinations.

The key can be withdrawn from the lock in both end positions.

see also...

- Latches GN 115 (lockable) → Page 950

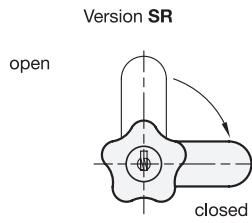
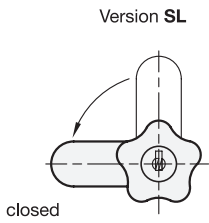
How to order

GN 217-40-A-SR

1	d_1
2	Type
3	Specification

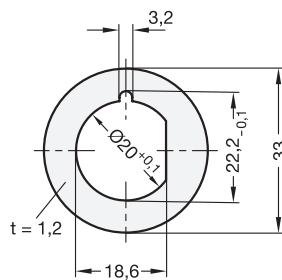
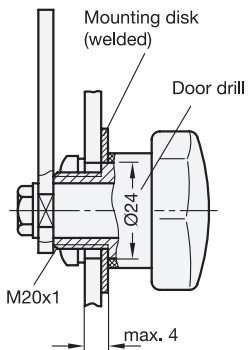
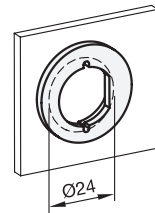


Construction and assembly instructions

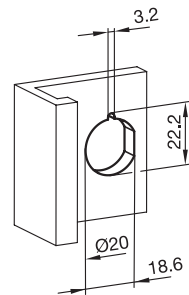


Construction examples

with mounting disk



Location hole directly incorporated



2.1
2.2
2.3
2.4
2.5
2.6
2.7
2.8
2.9