

Bores for countersunk screw  
DIN 7991-M6  
Type SH



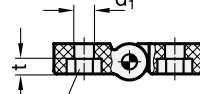
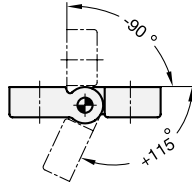
ELESA original design CFV.

**3 Type**

**SH** 2x2 bores  
for countersunk screws

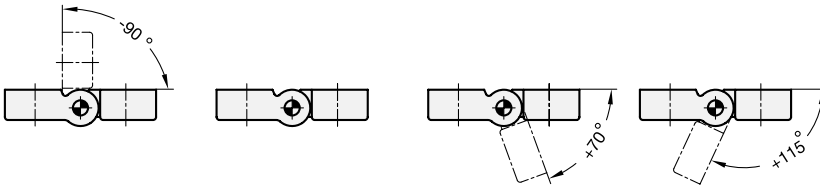
**EH** 2x2 bores  
for hexagon screws

**Swivelling range**



Bores for hexagon screw  
ISO 4014-M6 (SW10)  
Type EH

Swivelling range with 4 indexing positions (loosening torque 3 Nm)



**1**

**2**

$l_1$	$l_2$	$l_3$	$d_1$	$d_2$	$h_1$	$h_2$	$h_3$	$m_1$	$m_2$	$t$
50	65	18,5	6,5	5	12	10	6	30	45	5

**Specification**

- Plastic (Polyamide PA)
  - glass fiber reinforced
  - black, matte
  - temperature resistant up to 80 °C
- Pin
  - Stainless Steel
  - German Material No. 1.4305
- *Plastic characteristics* → Page 1483
- **RoHS compliant**

**Information**

Hinges GN 222 with indexing positions are very stable and notable for a high loosening torque of 3 Nm in 4 indexing positions (test result after 20.000 detents).

Details to mechanical load bearing capacity on request.

**How to order**

**GN 222-50-65-SH**

<b>1</b>	$l_1$
<b>2</b>	$l_2$
<b>3</b>	Type

