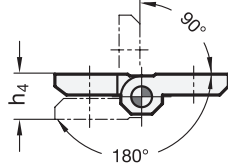
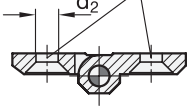


Swivelling range

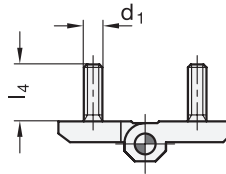


Type A

Bore for countersunk head screw
DIN 7991



Type C



4 Type

- A** 2x2 bores for countersunk screws
- C** 2x2 threaded studs

2 **3**

l ₁	l ₂	Material						d ₁	d ₂	d ₃	h ₁	h ₂	h ₃	h ₄ +0,5	l ₃	NI, A4	l ₄		m ₁	m ₂
		Type A			Type C												ZD	NI		
30	30	ZD	NI	A4	AL	-	-	-	4,3	3	7,5	4	4,5	8,5	10,7	10,7	-	-	18	18
40	40	ZD	NI	A4	AL	ZD	NI	M 5	5,3	4	9	5	5,5	11	14	16	12	11	25	25
50	50	ZD	NI	A4	AL	ZD	NI	M 6	6,4	6	11,5	6	6,5	13	18,5	21	12	13	30	30
60	60	ZD	NI	A4	AL	ZD	NI	M 8	8,3	8	15	8	8,5	17	21,5	26	14	17	36	36

Specification

1 **5**

- Zinc die casting **ZD**
 - plastic coated
 - black, RAL 9005, textured finish **● SW**
 - silver, RAL 9006, textured finish **● SR**
 - chrome-plated **● CR**
- Stainless Steel
 - AISI CF-8 **NI**
 - German Material No. 1.4408 **A4**
 - matte blasted **GS**
- Aluminum **AL**
 - anodized, natural color **● EL**
- Pin
 - Stainless Steel AISI 303 for ZD
 - Stainless Steel AISI 316Ti (A4) for AL, NI and A4
- Threaded stud (Type C)
 - Stainless Steel AISI 316 for ZD and AL
 - Stainless Steel AISI CF-8 for NI, casted „in one piece“

- *Stainless Steel characteristics* → Page 1489
- *Load rating information* → Page 1459 ff.
- **RoHS compliant**

Information

GN 237 hinges are characterized by their compact and stable design. The various material and surface choices in combination with two mounting types enable very specific applications.

see also...

- *List of hinge types* → Page 956 ff.
- *Hinges GN 337 (detachable)* → Page 986
- *Hinges GN 238 (adjustable)* → Page 978
- *Hinges GN 237.1 (Plastic)* → Page 964
- *Sheet metal hinges GN 136* → Page 965
- *Hinges GN 138* → Page 966
- *Stainless Steel-Spacer plates GN 2370* → Page 961
- *Stainless Steel-Plates with tapped holes GN 2372* → Page 960
- *Rubber bumper stops GN 2374* → Page 962

How to order

1	Material
2	l₁
3	l₂
4	Type
5	Finish

GN 237-ZD-60-60-A-SR

3.1
3.2
3.3
3.4
3.5
3.6
3.7
3.8
3.9

