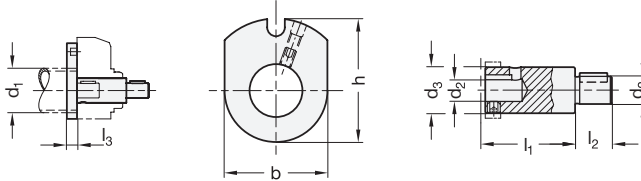
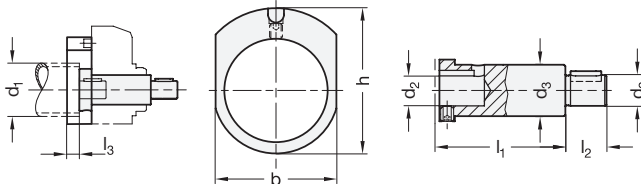


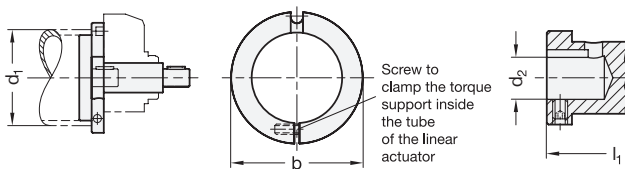
Identification no. 1 (Size $d_1 = 18 \dots 50$)



Identification no. 2 (Size $d_1 = 30 \dots 50$)



Identification no. 1 and 2 (Size $d_1 = 60$)



3 Identification no.

- 1 for mechanical position indicators GN 953 / GN 954 / GN 955
- 2 for electronic position indicators GN 9053 / GN 9054

1

2

d_1 Ø Linear-actuator	d_2 f7	b	d_3	h	l ₁		l ₂	l ₃	for position indicators
					ld. no. 1	ld. no. 2			
18	6	24	10	33	23	-	16	10	GN 955
30	8	35	14	42	30	36	15	10	GN 954 / GN 9054
40	12	47	20	56,5	39	43	16	10	GN 953 / GN 9053
50	12	58	20	61	39	43	17	10	GN 953 / GN 9053
60	14	64	20	-	39	43	18	-	GN 953 / GN 9053

Specification

- Adaptor shaft
Steel
blackened
- Torque support
Aluminum
black anodized
- ISO-Fundamental tolerances → Page 1479
- RoHS compliant

Accessory

- Position indicators and handwheels have to be ordered separately.

On request

- Linear actuators with analogue position indicator GN 000.8

Information

The GN 295 installation kits are needed for mounting a position indicator on linear units. The installation kits comprise an adaptor shaft and a torque support including attachment screws.

Order mechanical position indicators GN 953 / GN 954 / GN 955 with a counter pitch that corresponds to that of the trapezoidal threaded spindle.

For position indicators GN 9053 / GN 9054, the position indicator pitch is programmed.

see also...

- Position indicators GN 953 / GN 954 / GN 955 → Page 296 / 298 / 300
- Position indicators GN 9053 / GN 9054 → Page 302 / 304
- Linear actuators → Page 1326 ff.
- Drive / Transfer units GN 391 → Page 1352

How to order

GN 295-30-8-1

1	d_1
2	d_2
3	Identification no.