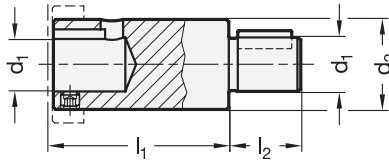
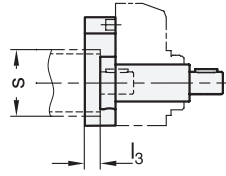
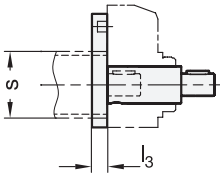


Identification no. 1



Identification no. 2



**3 Identification no.**

- 1 for mechanical position indicators GN 953 / GN 954
- 2 for electronic position indicators GN 9053 / GN 9054

1

2

s ∅ Linear actuator	d <sub>1</sub> f7	d <sub>2</sub>	b	h	l <sub>1</sub> Id. no. 1	l <sub>1</sub> Id. no. 2	l <sub>2</sub>	l <sub>3</sub>	for position indicator
30	8	14	40	43,5	35	36	15	12	GN 954 / GN 9054
40	12	20	50	56,5	39	43	16	12	GN 953 / GN 9053
50	12	20	60	61,5	39	43	17	12	GN 953 / GN 9053

**Specification**

- Adaptor shaft  
Steel  
blackened
- Torque support  
Aluminum  
blank, ground
- ISO-Fundamental tolerances → Page 1479
- RoHS compliant

**Accessory**

- Position indicators and handwheels have to be ordered separately.

**Information**

The GN 296 installation kits are needed for mounting a position indicator on linear units. The installation kits comprise an adaptor shaft and a torque support including attachment screws.

Order mechanical position indicators GN 953 / GN 954 / GN 955 with a counter pitch that corresponds to that of the trapezoidal threaded spindle.

For position indicators GN 9053 / GN 9054, the position indicator pitch is programmed.

see also...

- Position indicators GN 953 → Page 296
- Position indicators GN 954 → Page 298
- Position indicators GN 9053 → Page 302
- Position indicators GN 9054 → Page 304
- Square linear actuators GN 291.1 → Page 1340

**How to order**

**GN 296-30-8-1**

1	s
2	d <sub>1</sub>
3	Identification no.

