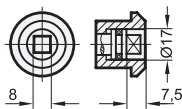


**Rost frei**  
Inox  
Stainless  
Steel

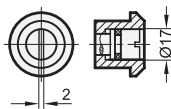
**1 Type**

**Operation**

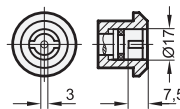
- VK8** with square spindle A/F8
- SCH** with slot
- VDE** with double bit
- RG** with knurled knob GN 7336
- KG** with wing knob
- HG** with lever



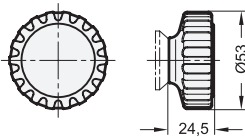
Type **VK8**



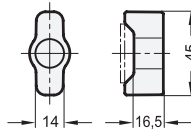
Type **SCH**



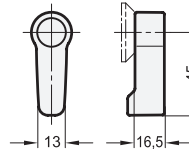
Type **VDE**



Type **RG**



Type **KG**



Type **HG**

**2**

**Latch distance A**

19	23	27	31	33	35	37	39	41
----	----	----	----	----	----	----	----	----

**Specification**

- Stainless Steel
  - Housing AISI 316
  - Locking mechanism AISI 316
  - Bolt AISI 316
  - Latch AISI 304
- all handles (Type RG / KG / HG)
  - Plastic (Polyamide PA)
  - black, matte
  - Cover cap light grey matte
- Protection class: IP 65
- *Stainless Steel characteristics* → Page 1489
- *Plastic characteristics* → Page 1483
- **RoHS compliant**

**Accessory**

- Socket keys GN 119.2 → Page 940
- Protective caps GN 120 → Page 942
- Opening handles GN 120.1 → Page 943

**Information**

The Stainless Steel-rotary clamping latches GN 516.5 have a closing mechanism which transfers the rotary movement of the operating element / key into a 90° turn and then into a 6 mm linear stroke.

This mechanism is designed for common applications such as making a tight and vibration-proof interlock in the end position (retaining position) in connection with an elastic element (door / casing seal).

9 latches with different cranks will cover latch distances (retaining zones) of between 19 and 41 mm. If the measured retaining position lies between two latch distances A, the next smaller value must be selected.

The rotary clamping latches GN 516.5 are supplied with the latch enclosed loose.

see also...

- *Technical and assembly instructions* → Page 919
- *List of latch types* → Page 892 ff.
- *Rotary clamping latches GN 516* → Page 918
- *IP-Protection classes* → Page 1482

**How to order**

**GN 516.5-VK8-19**

<b>1</b>	<b>Type</b>
<b>2</b>	<b>Latch distance A</b>