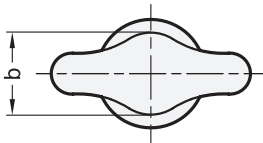
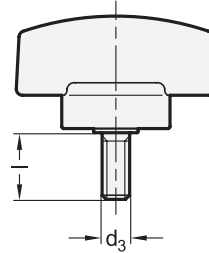
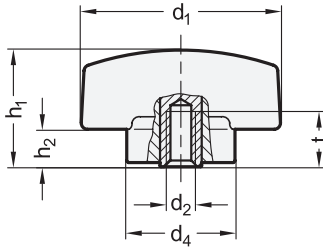




ELESA original design CTD



<sup>1</sup> d <sub>1</sub>	<sup>2</sup> d <sub>2</sub>	<sup>2</sup> d <sub>3</sub>	<sup>3</sup> Length l		d <sub>4</sub>	b	h <sub>1</sub>	h <sub>2</sub>	t min.	<sup>4</sup> Torque ±15% in Nm	
48	M 5	M 5	10	16	26	20	28	9	8	2	3
48	M 6	M 6	16	25	26	20	28	9	8	2	3

**Specification**

- Plastic Technopolymer (Polyamide PA)
  - glass fiber reinforced
  - temperature resistant up to 80 °C
  - black, matte
  - orange, matte

● SW  
● OR

- Torque mechanism Steel, nickel plated
- Bushing / Screw Steel, nickel plated
- *Plastic characteristics* → Page 1483
- RoHS compliant

**Information**

GN 5320 torque limiting wing nuts / wing screws are used when the manually applied torque is to be limited.

When turned clockwise, the torque of the wing nuts /wing screws triggers an “over-engagement” as soon as the specified torque is reached. When tightening, this will ensure that the maximum permissible torque is not exceeded.

Upon twisting to the left, the torque needed for disconnection is reliably applied.

see also...

- *Torque limiting knobs GN 3663* → Page 447
- *Torque limiting knob screws GN 3663* → Page 447

How to order (Bushing)	
<sup>1</sup>	d <sub>1</sub>
<sup>2</sup>	d <sub>2</sub>
<sup>4</sup>	Torque
<sup>5</sup>	Color
<b>GN 5320-48-M5-2-SW</b>	

How to order (Screw)	
<sup>1</sup>	d <sub>1</sub>
<sup>2</sup>	d <sub>3</sub>
<sup>3</sup>	Length l
<sup>4</sup>	Torque
<sup>5</sup>	Color
<b>GN 5320-48-M6-16-3-SW</b>	

