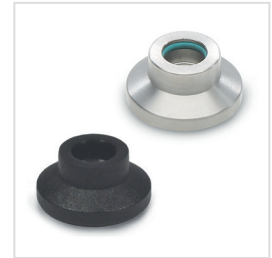
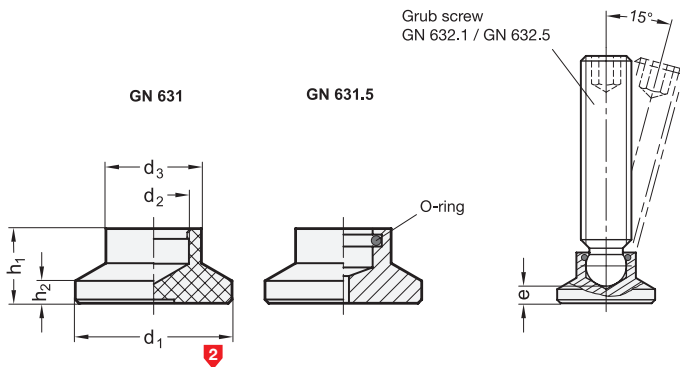


## Mounting example



 Inox  
Stainless  
Steel

d <sub>1</sub> GN 631	GN 631.5	d <sub>2</sub>	d <sub>3</sub>	e ≈	h <sub>1</sub>	h <sub>2</sub>	Grub screw GN 632.1 / GN 632.5
15	-	4,5	8,6	3,6	7,6	2,5	M 6
15	-	6,1	8,6	2,5	7,6	2,5	M 8
18	-	4,5	10,8	5,2	9,2	2,5	M 6
18	-	6,1	10,8	4,2	9,2	2,5	M 8
18	-	7,8	10,8	3,8	9,2	2,5	M 10
21	21	4,5	12,8	6	10	3	M 6
21	21	6,1	12,8	5	10	3	M 8
21	21	7,8	12,8	4,3	10	3	M 10
21	21	9,4	12,8	3,4	10	3	M 12
25	25	4,5	13	6,5	10,5	3	M 6
25	25	6,1	13	5,5	10,5	3	M 8
25	25	7,8	13	4,6	10,5	3	M 10
25	25	9,4	13	3,6	10,5	3	M 12
32	32	4,5	14	7	11	3	M 6
32	32	6,1	14	6	11	3	M 8
32	32	7,8	14	5	11	3	M 10
32	32	9,4	14	4,2	11	3	M 12
40	40	6,1	16	8	13	4	M 8
40	40	7,8	16	7	13	4	M 10
40	40	9,4	16	6,2	13	4	M 12

## Specification

- **GN 631**  
Plastic Technopolymer (Polyacetal POM)  
- temperature resistant up to 80 °C  
- black, matt
- **GN 631.5**  
- Stainless Steel AISI 303  
- O-Ring rubber FPM (Viton®)  
temperature resistant up to 200 °C
- *Stainless Steel characteristics* → Page 1489
- *Plastic characteristics* → Page 1483
- RoHS compliant

## Information

Thrust pads GN 631 / GN 631.5 with ball point grub screw GN 632.1 / GN 632.5 are ideal to transmit clamping forces. They lean to uneven and unparallel surfaces. They are easy to press-on to the ball point of the grub screw by hand.

see also...

- *Ball jointed levelling feet GN 638* → Page 1030
- *Information of static load* → Page 1030

## How to order (Plastic)


 GN631-18-6,1
1 d<sub>1</sub>2 d<sub>2</sub>

## How to order (Stainless Steel)


 GN631.5-32-7,8
1 d<sub>1</sub>2 d<sub>2</sub>