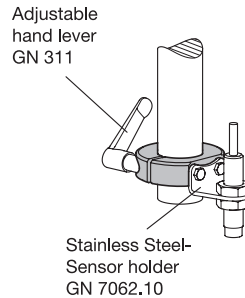
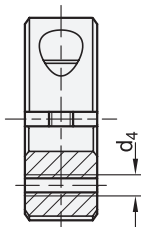
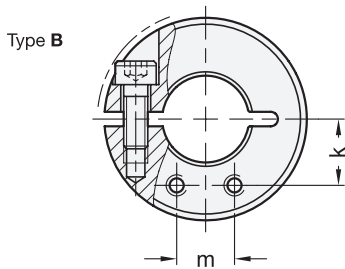


ROSTFRET
Inox
Stainless
Steel



4 Type

- A** Extension-tapped holes, radial
- B** Extension-tapped holes, axial

1 2

d ₁	d ₂ H10 recommended shaft tolerance h11 Bore series		b ±0,2	d ₃	d ₄	l ₁	l ₂	m	Bore series		k	s	t	x ≈ max. protrusion of cap screw	Adjustable hand lever for d ₃
	1	2							1	2					
30	B 12	-	11	M 4	M 3	13	15	8	9,7	-	2,1	4	0,7	GN 311-30-M4-12-SW	
32	B 14	-	11	M 4	M 3	14	15,5	8	10,8	-	2,1	4	0,7	GN 311-30-M4-12-SW	
36	B 15	B 16	13	M 5	M 4	15	19,9	10	11,7	12	2,1	5,5	1,4	GN 311-30-M5-13-SW	
42	B 18	B 20	15	M 5	M 4	17	24,7	12	13,7	14,3	3	5,5	0,6	GN 311-30-M5-15-SW	
48	B 22	B 25	15	M 5	M 4	20	26,5	12	16,4	17,2	3	5,5	0	GN 311-45-M5-16-SW	
55	B 28	B 30	15	M 6	M 5	22,5	31,6	18	18,7	19,3	3	7	0,5	GN 311-45-M6-18-SW	
60	B 32	B 35	15	M 6	M 5	25	33,2	18	21,2	22	4	7	0,4	GN 311-45-M6-19-SW	
65	B 40	-	15	M 6	M 5	27,5	34,6	18	24,7	-	4	7	0,5	GN 311-45-M6-20-SW	

Specification

- Stainless Steel **NI**
- Sintered Steel AISI 316 LHC
- Socket head cap screw DIN 912 Stainless Steel AISI 304
- ISO-Fundamental tolerances → Main catalogue page 1479
- Stainless Steel characteristics → Main catalogue page 1489
- RoHS compliant

Accessory

- Adjustable hand levers GN 311 → Page 24
- Damping washer GN 7062.30 → Page 26
- Stainless Steel-Sensor holder GN 7062.10 → Page 25

3

Information

With extension-tapped holes of the semi-split Stainless Steel-Set collars GN 7062.1, sensor holders GN 7062.10 or other elements such as the gear lever or cam can be attached to shafts and axles.

They can be assembled safely and easily with a high clamping force by reducing the slot height, without damaging the surface of shafts and axles.

The thread d₃ for sizes d₁ = 30 to 36 is designed as a through hole; for sizes d₁ = 42 and larger, it is designed as blind hole.

see also...

- Semi-split Stainless Steel-Set collars GN 7072.1 (with extension-tapped holes) → Page 20

How to order	1 d ₁
	2 d ₂
GN 7062.1-55-B28-NI-A	3 Material
	4 Type

