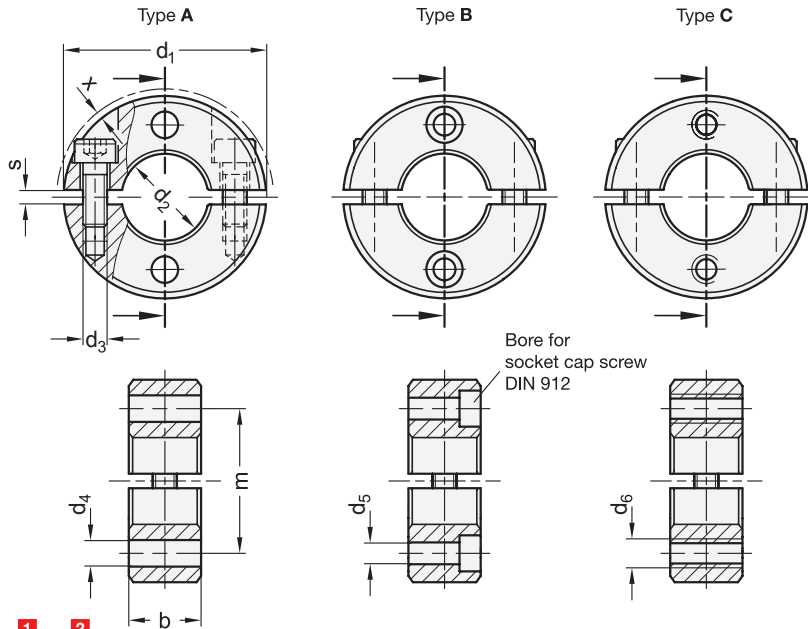


GN 7072.2 Split Stainless Steel-Set collars

with flange holes



Rost frei
Inox
Stainless
Steel

4 Type

- A** with two through holes
- B** with two countersunk holes for socket head cap screws
- C** with two tapped holes

d ₁	d ₂ H10 recommended shaft tolerance h11		b ±0,2	d ₃	d ₄	d ₅	d ₆	m		s	x ≈ Protrusion of cap thread	Clamping kits for d ₃
	Bore series 1	Bore series 2						Bore series 1	Bore series 2			
30	B 12	-	11	M 4	4,5	3,5	M 4	21	-	2,1	0,7	GN 311-30-M4-12-SW
32	B 14	-	11	M 4	4,5	3,5	M 4	23	-	2,1	0,7	GN 311-30-M4-12-SW
36	B 15	B 16	13	M 5	5,5	4,5	M 5	25,5	26	2,1	1,4	GN 311-30-M5-13-SW
42	B 18	B 20	15	M 5	5,5	4,5	M 5	30	31	3	0,6	GN 311-30-M5-15-SW
48	B 22	B 25	15	M 5	6,5	5,5	M 6	35	36,5	3	0	GN 311-45-M5-16-SW
55	B 28	B 30	15	M 6	6,5	5,5	M 6	41,5	42,5	3	0,5	GN 311-45-M6-18-SW
60	B 32	B 35	15	M 6	6,5	5,5	M 6	46	47,5	4	0,4	GN 311-45-M6-19-SW
65	B 40	-	15	M 6	6,5	5,5	M 6	52,5	-	4	0,5	GN 311-45-M6-20-SW

Specification

- Stainless Steel Sintered Steel AISI 316 LHC
- Socket head cap screw DIN 912 Stainless Steel AISI 304
- ISO-Fundamental tolerances → Main catalogue page 1479
- Stainless Steel characteristics → Main catalogue page 1489
- RoHS compliant

Accessory

- Clamping kits GN 311 → Page 24
- Damping washer GN 7062.30 → Page 26

Information

NI With split Stainless Steel-Set collars GN 7072.2, e.g., axles are attached to housing, or wheels and washers are installed on shafts.

They can be assembled safely and easily with a high clamping force by reducing the slot height, without damaging the surface of shafts and axles. As compared to semi-split set collars, split set collars can even be assembled radially.

The thread d₃ for sizes d₁ = 30 to 36 is designed as a through hole; for sizes d₁ = 42 and larger, it is designed as blind hole.

see also...

- Semi-split Stainless Steel-Set collars GN 7062.2 (with flange holes) → Page 14
- Semi-split set collars GN 706.2 → Page 12

How to order	
1	d ₁
2	d ₂
3	Material
4	Type

GN 7072.2-42-B18-NI-B

