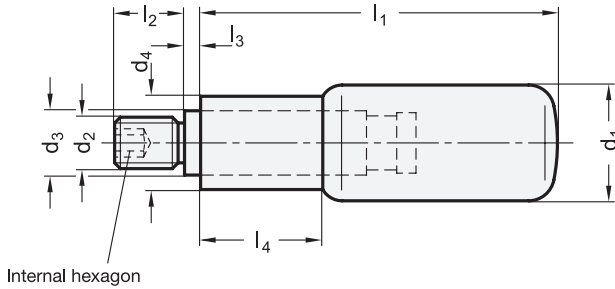




ROSTFREI  
Inox  
Stainless  
Steel



1.1

1.2

1.3

1.4

2

3

d <sub>1</sub>		d <sub>2</sub>		d <sub>3</sub>	d <sub>4</sub>	l <sub>1</sub>	l <sub>2</sub>	l <sub>3</sub> ≈	l <sub>4</sub>
KT	NI								
16	-	M 6	-	10	13	41,5	12	2,5	15
18	18	M 6	M 8	10	14,5	56	13	2,5	19
22	22	M 8	M 10	14	18,5	59	14	2,5	21
24	24	M 8	M 10	14	18,5	74	16	2,5	27
25	-	M 10	-	16	20	84	16	2,5	30

2.1

**Specification**

- Plastic **KT**  
Technopolymer (Polyamide PA)  
- temperature resistant up to 90 °C  
- black, matte finish
- Stainless Steel **NI**  
- AISI 303  
- fine turned, blank
- Spindle  
Stainless Steel AISI 303
- *Stainless Steel characteristics → Page 1489*
- *Plastic characteristics → Page 1483*
- **RoHS-compliant**

1

**Information**

Typical in design are the revolving handles GN 798.1 with their stepped shape consisting of two cylinders giving the operator a better grip.

see also...

- *Retractable handles GN 798.5 (with hold in both positions) → Page 44*

2.2

2.3

2.4

How to order

**GN 798.1-KT-16-M6**

1	<b>Material</b>
2	d <sub>1</sub>
3	d <sub>2</sub>