

2 Type
BL Clamping arm horizontal



Size (Piston-Ø)	max. clamping moment in Nm at 6 bar	F _S in N Clamping force at r at 6 bar	F _H in N Holding capacity at r at 6 bar	a	b -0,2	d ₁ h8	d ₂	d ₃ H8	d ₄	d ₅	h ₁	h ₂
20	60	2220	4070	27	10	28	M 5	7	4,2	M 5	16	51
32	150	4110	5620	36,5	12	40	M 6	9	5	G 1/8	21	75,5
40	300	6740	7530	44,5	16	50	M 8	11	6,8	G 1/8	26	91,5
50	475	9000	13300	52,5	18	60	M 10	13	8,5	G 1/8	31	114

Size (Piston-Ø)	l ₁ -0,5	l ₂	l ₃	l ₄	l ₅	m ₁ ±0,01	m ₂	m ₃ ±0,01	m ₄ ±0,01	m ₅	r	s	t
20	150	37,5	70	21,5	4,5	12	7,5	17	22	13	27	32	13
32	206	52	91	31	6	18	10	25	30	22	36,5	42	15
40	244	63	104	37	7,5	22	13	30	37	25	44,5	52	18
50	279	72,5	110,5	41,5	8	27	12	47	44	35	52,5	62	21

Specification

- Steel C45 blackened
- max. pressure 10 bar
- ISO-Fundamental tolerances → Page 1479
- RoHS compliant

Information

The maximum clamping moment of the GN 864 pneumatic fastening clamps is reached once the clamping arm is at the end of its stroke. For this reason the working stroke should be completed as closely as possible to the stroke end.

see also...

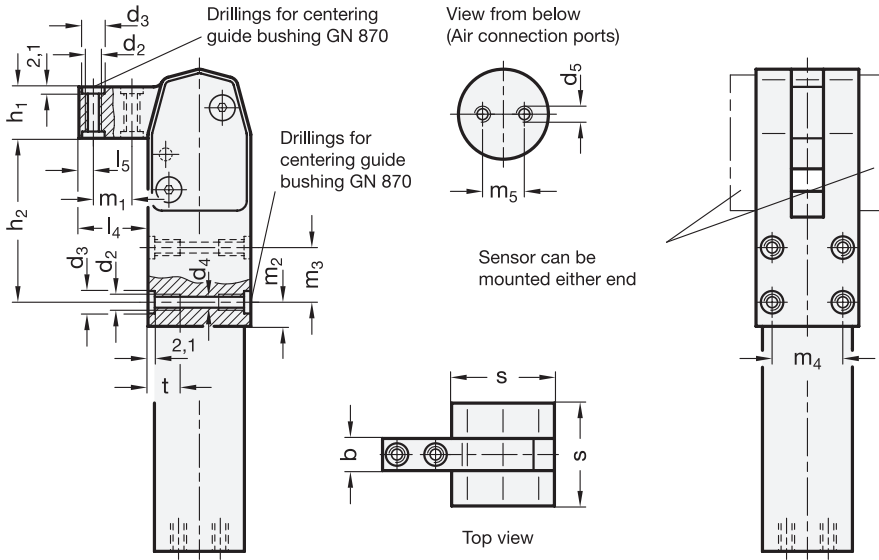
- Operating principle, mounting methods → Page 592
- Centering guide bushing accessories GN 870 → Page 610
- Sensor accessories → Page 611
- Accessories → Page 600 ff.

How to order

GN864-20-BL

1 Size

2 Type



1.1
1.2
1.3
1.4

