

Installation instructions

Before installation of the position indicator a bore for the torque limiting contact point is to be placed (see left).

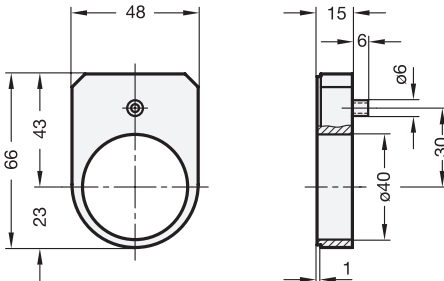
With the **adapter bushings GN 952.1** → Page 306, the hollow shaft (with Bore 20 H7) of the position indicator can be adapted to fit the spindle.

The mounting of the position indicator is via the torque limiting contact point which is connected to the hollow spindle and secured with a grub screw.

Before completing the installation, turn the spindle to the starting point (0) position and zero the position indicator.

With **clamping plates GN 953.6** → Page 308, spindles can be clamped and secured after adjusting.

GN 953.1 | Spacer plate



Specification

- Plastic (Polyamide PA) black, matte
- RoHS compliant



Information

The previous position indicators GN 952 are replaced by position indicators GN 953, they are dimensionally reduced compared to GN 952.

The spacer plate is used as adapter in case the dimensions on themachine body are applied to match the previous model GN 952.

How to order
GN 953.1